

AL SERIES COMPRESSOR

SUPERIOR EFFICIENCY FOR LOW & MEDIUM TEMPERATURE APPLICATIONS



AUTHORIZED REFRIGERANTS

R-290

FEATURES & BENEFITS

UP TO 15% BETTER EFFICIENCY

- New motor and improved suction and discharge systems maximize compressor efficiency

COMPACT SIZE FOR 15-20 CC DISPLACEMENTS

- Small housing size
- Wide cooling capacity range
- Offer the same compressor for LBP and MBP applications

VERSATILITY

- Industry standard suction, discharge and process connections make installation and serviceability easy

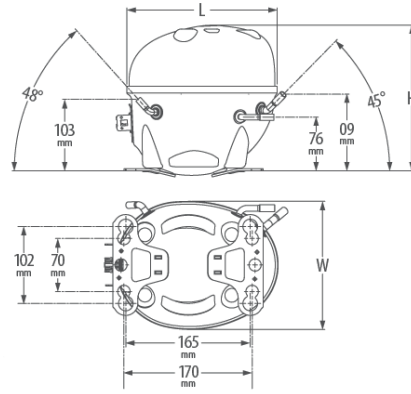
NATURAL REFRIGERANT

- Designed specifically for natural refrigerant R-290 (propane)

DIMENSIONS

MODEL	L (mm)	H (mm)	W (mm)
AL (HH)	215	214	169
AL (SH)	215	207	169

NOTE: HH: High Housing / SH: Short Housing



COOLING PERFORMANCE

R-290 COMPRESSOR PERFORMANCE - L/MBP ENI2900 / 50 HZ

MODEL	RATING POINT	COOLING CAPACITY			EFFICIENCY (EER / COP)			VOLTAGE / FREQUENCY	MOTOR TYPE	DISPLACEMENT		WEIGHT	
		Watt	Btu/h	kcal/h	W/W	Btu/Wh	kcal/Wh			cm ³	in ³	kg	lb
ALX430U-FZ1A	3	378	1290	325	1,16	3,96	1,00	220-240V/50Hz	CSIR	15,09	0,92	13,2	29,1
	4	1084	3700	932	2,00	6,83	1,72						
ALX435U-FZ1A	3	457	1560	393	1,19	4,05	1,02	220-240V/50Hz	CSIR	17,71	1,08	15,0	33,1
	4	1281	4370	1101	1,99	6,80	1,71						
ALX430U-FZ3B	3	363	1240	312	1,32	4,49	1,13	220-240V/50Hz	NTC CSR	15,09	0,92	13,1	28,9
	4	1093	3730	940	2,30	7,84	1,97						
ALX435U-FZ3B	3	454	1550	391	1,28	4,37	1,10	220-240V/50Hz	NTC CSR	17,71	1,08	13,1	28,9
	4	1294	4415	1113	2,17	7,41	1,87						
ALX440U-FZ3B	3	1800	528	454	1,31	4,47	1,13	220-240V/50Hz	NTC CSR	19,95	1,22	13,6	30,0
	4	4990	1463	1257	2,18	7,43	1,87						

Rating Point 3 (ENI2900, Fan)
Evap. Temp: -35°C
Cond. Temp: 40°C

Return Gas Temp: 20°C
Liquid Temp: 40°C
Ambient Temp: 32°C

Rating Point 4 (ENI2900, Fan)
Evap. Temp: -10°C
Cond. Temp: 45°C

Return Gas Temp: 20°C
Liquid Temp: 45°C
Ambient Temp: 32°C

Oil Charge: 327 mL
Oil Type: POE
Oil Viscosity: 32 cSt
Cooling: FAN

ASHRAE / 50 HZ

MODEL	RATING POINT	COOLING CAPACITY			EFFICIENCY (EER / COP)			VOLTAGE / FREQUENCY	MOTOR TYPE	DISPLACEMENT		WEIGHT	
		Watt	Btu/h	kcal/h	W/W	Btu/Wh	kcal/Wh			cm ³	in ³	kg	lb
ALX430U-FZ1A	1	681	2325	586	1,52	5,18	1,30	220-240V/50Hz	CSIR	15,09	0,92	13,2	29,12
	2	1357	4630	1167	2,21	7,53	1,90						
ALX435U-FZ1A	1	821	2800	706	1,50	5,12	1,29	220-240V/50Hz	CSIR	17,71	1,08	15,0	33,09
	2	1600	5460	1376	2,13	7,27	1,83						
ALX430U-FZ3B	1	665	2270	572	1,70	5,81	1,46	220-240V/50Hz	NTC CSR	15,09	0,92	13,1	28,9
	2	1363	4650	1172	2,51	8,55	2,15						
ALX435U-FZ3B	1	835	2850	718	1,70	5,79	1,46	220-240V/50Hz	NTC CSR	17,71	1,08	13,1	28,9
	2	1562	5330	1343	2,32	7,91	1,99						
ALX440U-FZ3B	1	935	3190	804	1,67	5,70	1,44	220-240V/50Hz	NTC CSR	19,95	1,22	13,6	30,0
	2	1829	6240	1572	2,40	8,18	2,06						

Rating Point 1 (ASHRAE 32, Fan)
Evap. Temp: -23,3°C
Cond. Temp: 54,4°C

Return Gas Temp: 32,2°C
Liquid Temp: 32,2°C
Ambient Temp: 32,2°C

Rating Point 2 (ASHRAE 32, Fan)
Evap. Temp: -6,7°C
Cond. Temp: 54,4°C

Return Gas Temp: 32,2°C
Liquid Temp: 32,2°C
Ambient Temp: 32,2°C

Oil Charge: 327 mL
Oil Type: POE
Oil Viscosity: 32 cSt
Cooling: FAN

APPLICATION WINDOW

CODE	PRESSURE	EVAPORATING TEMPERATURE RANGE											
		-40°C	-35°C	-30°C	-25°C	-20°C	-15°C	-10°C	-5°C	0°C	5°C	10°C	15°C
1 & 2	LBP												
ALX	L/MBP												
3 & 4	M/HBP												

FLYER-AL-EN-2309©2023 Tecumseh Products Company. All rights reserved.



DISCOVER
THE TECUMSEH
PRODUCT RANGE
TECUMSEH.COM

