

COUNTERPERSON TRAINING



TABLE OF CONTENTS

COURSE DESCRIPTION	3
ABOUT US	3
INTRODUCING TECTOOLS	4
CUSTOMER & TECHNICAL SERVICE	5
WEBSITE RESOURCES	6-7
TECHNICAL LITERATURE REVIEW	8-9
CUSTOMER RESOURCE TOOLS	10
WARRANTY INFORMATION	11
COMPRESSOR MODEL NOMENCLATURE	12
CONDENSING UNIT NOMENCLATURE	13
CELSEON MODEL NOMENCLATURE	13
SERIAL LABELS	14



COURSE DESCRIPTION



Training includes a review of Tecumseh literature that is primarily used to facilitate product selection. Attendees will learn how to decipher Tecumseh compressor and condensing unit model numbers and item numbers (Bill of Materials). Warranty policies and claims processing for North American based Authorized Wholesalers and Original Equipment Manufacturers (OEM) are also discussed.

ABOUT US

Tecumseh’s Global Headquarters in Ann Arbor, Michigan serves as the regional management center for North America. Other North American facilities include a manufacturing facility and distribution center in Tupelo, Mississippi; a distribution center and offices near London, Ontario, Canada; and Monterrey, Mexico

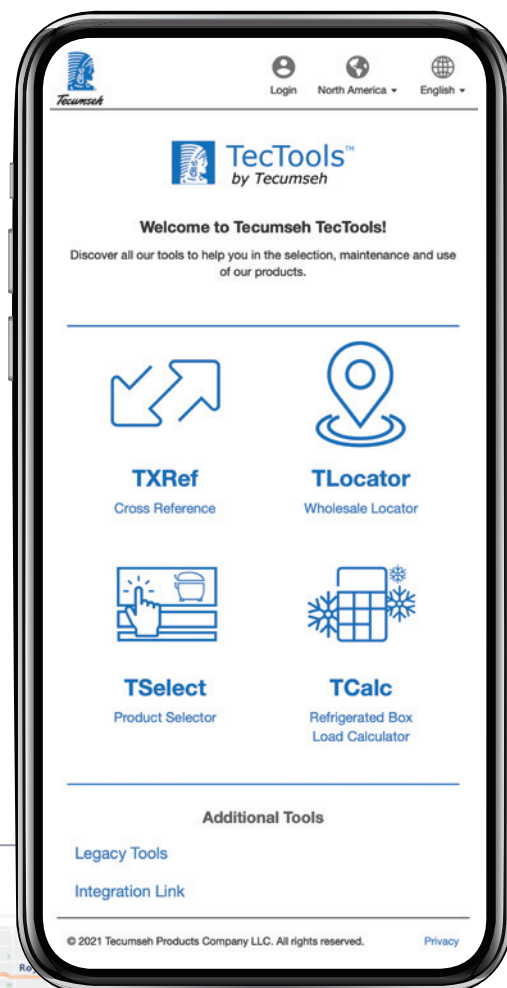


INTRODUCING TecTools

TecTools is our bundle of comprehensive customer tools packed in one easy to use app. TecTools makes it easy for you to find the right product in your region with just a few clicks.

From our spare parts finder and product selector, to our cross-reference tool and box load calculator, we have the tools that will make it easier than ever to quickly find what you need.

- **Compressor Cross Reference** – Quickly find current Tecumseh products to replace competitor models as well as obsolete Tecumseh models.
- **Wholesale Locator** – Locate authorized Tecumseh wholesalers near you!
- **Product Selector** – Find Tecumseh products that match your exact specifications. Currently only available for compressors and condensing units.
- **Refrigerated Box Load Calculator** – Quickly determine the cooling capacity needed for chiller and freezer applications, taking out the guesswork when finding the perfect solution for your application.



To get started, please select room type

Please Select Room Type

What is your target room temperature?

°F

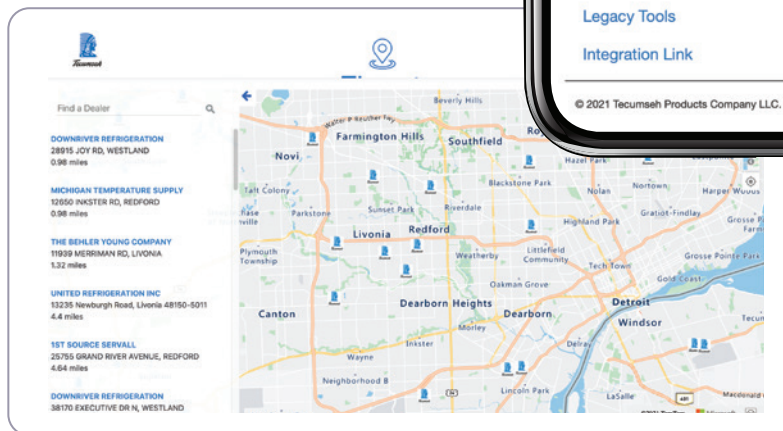
What is your target room relative humidity?

%

Do you want an Indoor or Outdoor Cooling Unit?

Please Select CU Type

Next



SCAN NOW TO
DOWNLOAD!



CUSTOMER & TECHNICAL SERVICE



Need technical or product support? Have a questions regarding your order status? Our customer support and technical service team members are available to assist and address your product and order related needs quickly and professionally.

Our skilled team members can be contacted by phone or e-mail and are able to provide expert support across the full range of Tecumseh products and solutions. You can rely on our customer support and technical service teams to help you find the best Tecumseh solution.

REACH OUT TO US!



Customer Service: **1.888.254.1033**

Technical Service: **1.800.211.3427**

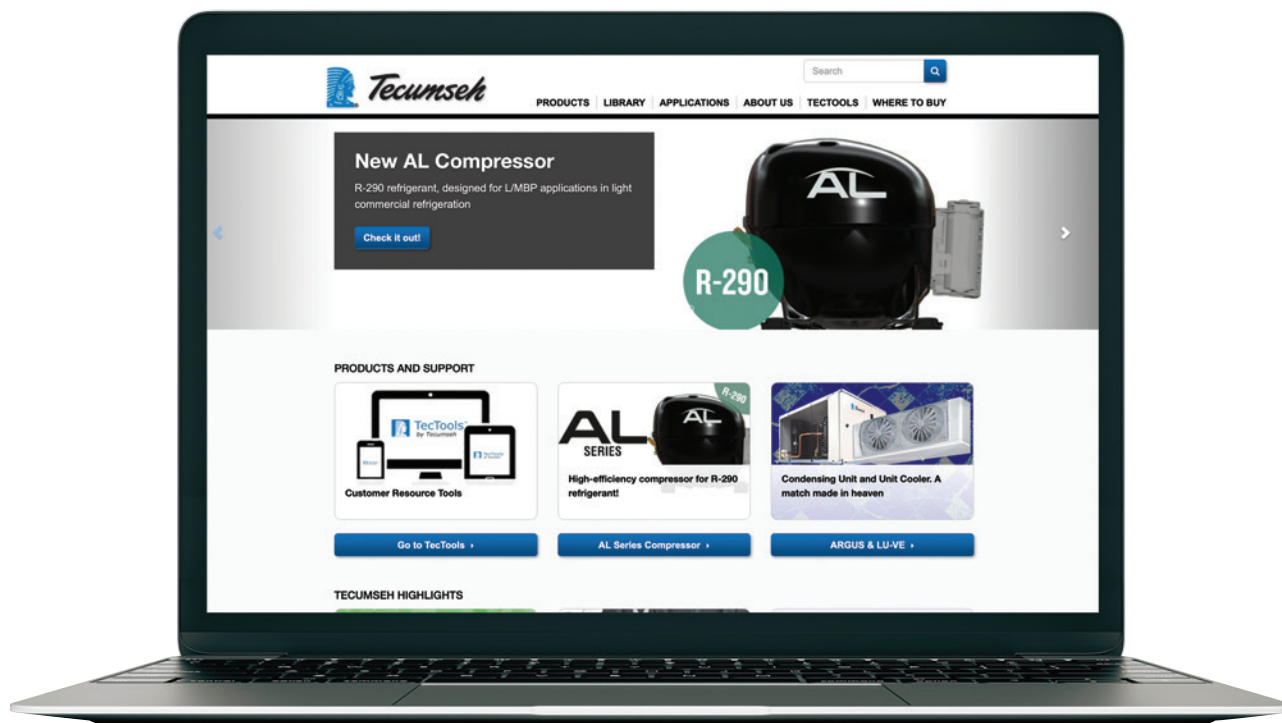


customerservice@tecumseh.com

technicalservice@tecumseh.com

WEBSITE RESOURCES

WWW.TECUMSEH.COM



HOME PAGE

This site is the central information hub for Tecumseh. A brief explanation is provided below.

A link to the “Product Search” tool can be found in the “Reference Tools” call-out box located on the left-hand side of the home page (under the rotating banner).

The “Product Search” tool can also be accessed under the “About Us” and “Products” sections of Tecumseh’s website.

“Parts Look-Up” can be found in the “Reference Tools” call out box.

“Advanced Products Search” and “Replacement Parts” look-up tools are located in the “Library” section of the website.

Compressor product specifications, technical data sheets and performance data sheets are also available through the Product Search tool.

A link to the web applications page is also provided.

The Home Page is also where you will find “What’s New” at Tecumseh.

The home page sliding images and highlighted boxes show the latest from Tecumseh.

ABOUT US

General information is provided regarding the company's history, global manufacturing operations, product offering and, commitment to innovation and product quality.

PRODUCTS

Hermetic compressors and condensing units offered by Tecumseh are outlined in this section. Ideal applications, and inherent advantages of reciprocating, rotary and scroll compressors are provided. Use the Product Search tool to select products based on a combination of their application, refrigerant type, cooling capacity and voltage requirements.

APPLICATIONS

Requirements for commercial refrigeration, residential air conditioning, specialty air conditioning and household refrigerator and freezer applications are described.

LIBRARY

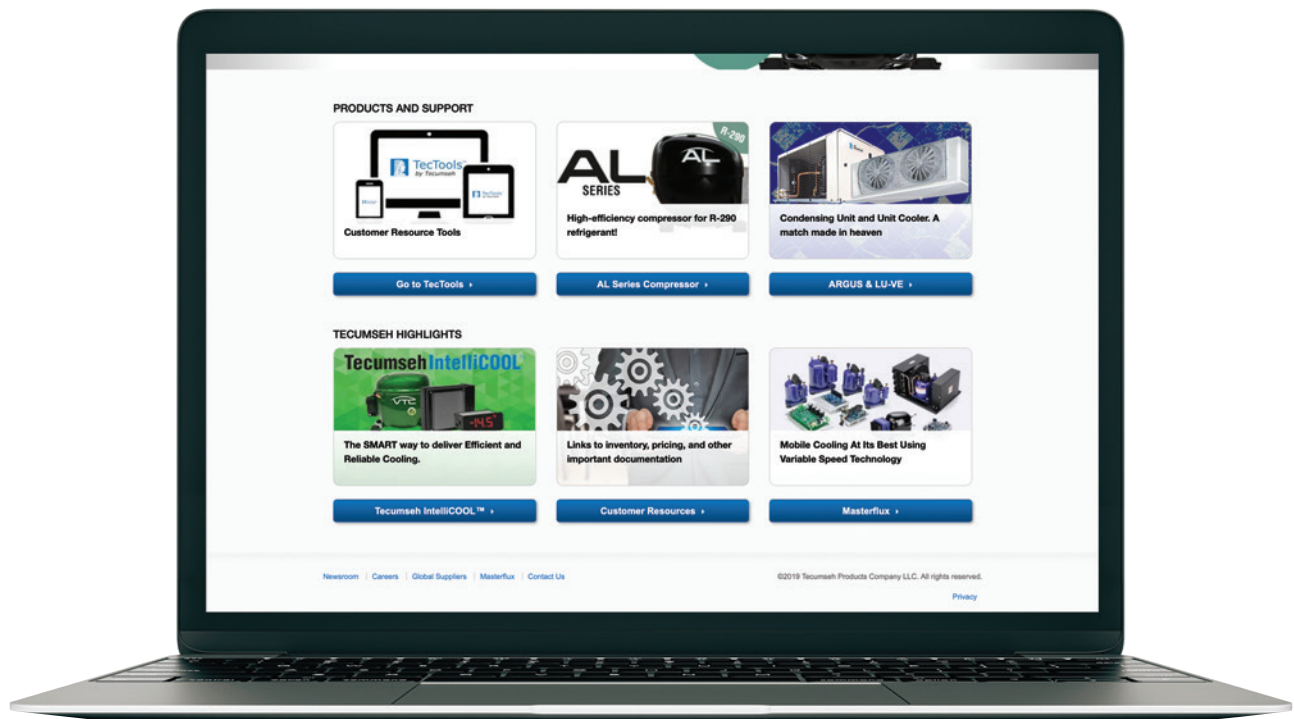
A one-stop shop for product literature, quick select guides, sales flyers and a variety of technical information (application and refrigerant guidelines, installation instructions, replacement parts lists, etc.). Tecumseh's global brand guidelines, sales terms and conditions, and quality certifications (ISO 9001 and ISO 14001) can be found here as well.

Many documents are available as downloadable PDF files that can be stored in digital form and/or printed.

A direct link is also provided to find Tecumseh Authorized Wholesalers by Country, Province/State and City.

CONTACT US

Phone, fax and e-mail addresses are available for contacting Tecumseh's corporate office as well as customer support, technical services and sales/marketing teams in various regions across the globe.



TECHNICAL LITERATURE REVIEW

A library of technical references is available for use by OEM's, Wholesalers, Contractors and Service Technicians. These references are designed to assist you in selecting products for specific applications. Please visit www.tecumseh.com to learn more. Select "Library" for the latest available technical documents which can be downloaded for free. Printed literature may be purchased through Tecumseh's "On-Line" store at www.thetecumsehstore.com.

COMPRESSOR RESOURCES



AFTERMARKET LINECARD

This document provides a quick summary on compressors, condensing units and unit coolers available to the wholesale market. This is the perfect document to familiarize yourself with the different product ranges across Tecumseh's wide product offering.



COMPRESSOR QUICK SELECT GUIDE

This guide is designed to help customers quickly select the appropriate Tecumseh compressor for the most common applications. Choose the appropriate Wholesale compressor for your application based upon criteria such as refrigerant, application type, cooling capacity and physical product dimensions.



CROSS REFERENCE GUIDE

This guide allows the user to quickly identify and replace competitor models for a smooth and easy transition.



REFRIGERATION SYSTEMS RESOURCES



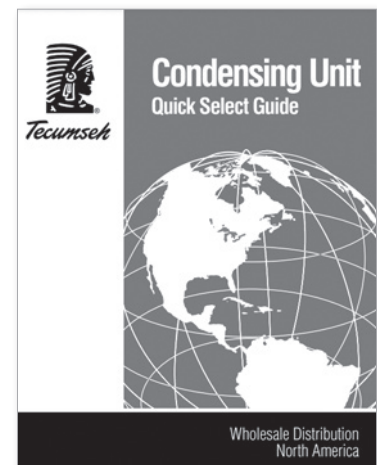
CELSEON R-290 IDCU BROCHURE

This product brief showcase the range of Tecumseh's latest indoor condensing units, now optimized for R-290 refrigerants. Users can this guide to size up their equipment selection requirements.



TECUMSEH ARGUS TECHNICAL GUIDE

This tech guide showcases Tecumseh's premium range of outdoor condensing units. This guide comes with the product's AWEF ratings, performance data, technical details, and feature set selections.

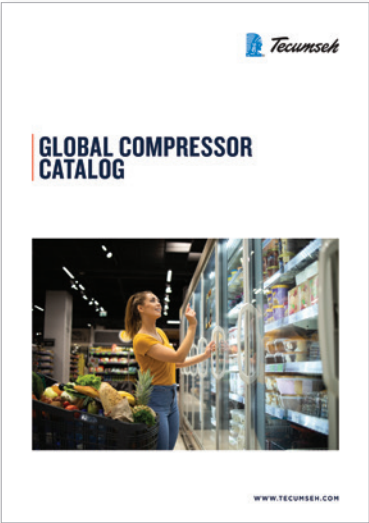
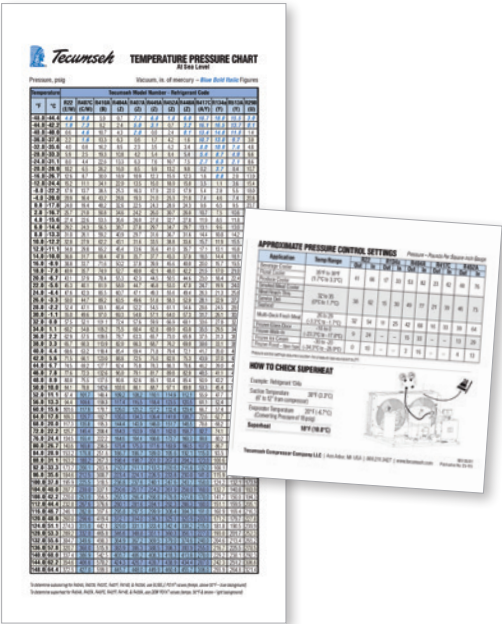


CONDENSING UNIT QUICK SELECT GUIDE

This document is a comprehensive guide for Tecumseh's Condensing Unit models which include performance data and technical specification.

CUSTOMER RESOURCE TOOLS

For complete North American customer resource tools, you may contact your local Tecumseh sales representative, or you can contact us at tecumsehmarketing@tecumseh.com for new and updated content.



GLOBAL COMPRESSOR CATALOG

This comprehensive guidebook showcases the full range of Tecumseh compressors globally. Please contact your regional Tecumseh sales rep to inquire for model availability.

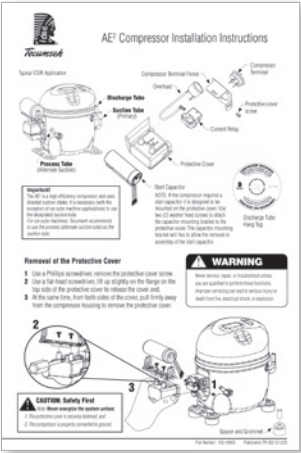


IN-STOCK & QUICK SHIP PROGRAMS

Lookout for the latest list of quick ship and in-stock ARGUS units that are prioritized to meet tight schedule orders. Kindly contact your Tecumseh sales rep for the latest stocked and quick ship model list.

PT TEMPERATURE CHARTS

This handy tool card provides a comprehensive temperature chart for contractors in the field. It also comes with a pressure control settings guide.



INSTALLATION GUIDES

Contractors can refer to the installation guides to install and service Tecumseh compressors and equipment accordingly. More manuals can be found at:

<https://production.tecumseh.com/en/na/library/installation-instructions/>

WARRANTY INFORMATION

For complete North American Warranty information, please contact your Company's Warranty Administrator, and refer to document number TW-NA-102 (latest revision level).

FREQUENTLY ASKED QUESTIONS (FAQs)

1. How is written notice to be given?
 - a. Via e-mail or written correspondence. However, e-mail is preferred.
2. Is it acceptable to return the product with written notice included with the shipment?
 - a. No, please provide written notice prior to returning the goods.
3. Where should I send the written notice?
 - a. For US based Authorized Wholesalers, written notice should be sent to:
US.Warranty@tecumseh.com
 For Canada based Authorized Wholesalers, written notice should be sent to:
CAN.Warranty@tecumseh.com
 For Mexico based Authorized Wholesalers, written notice should be sent to:
MX.Warranty@tecumseh.com
4. What information should be included in the written notice?
 - a. The following information should be included:
 - i. Tecumseh Model Number(s)
 - ii. Respective Quantities
 - iii. Respective Manufacturing Date Code(s)
 - iv. Basic description of the issue
5. Will a receipt be provided when written notice is received?
 - a. Yes, we will send a return reply e-mail acknowledging the receipt of written notification.
6. Do I need to include the electrical components with returned compressor?
 - a. Yes, please refer to page 2 of the new Warranty Policy and follow the process listed under "Field Failure Returns & Credit Guidelines."
7. What happens if I return a compressor that is outside the Warranty Period?
 - a. As stated on page 3 of the new Warranty Policy, a fifty dollar (\$50) disposal fee will be charged for compressors that are returned which are outside the Warranty Period.
8. How should the compressor(s) be prepared for return?
 - a. Any open compressor tubes should be sealed sufficiently to prevent leakage during transit with the compressor's oil charge intact.

COMPRESSOR MODEL NOMENCLATURE



AE	4	440	Y	AA	1A
AEA	4	440	Y	XA	
COMPRESSOR FAMILY (FIRST TWO DIGITS)	APPLICATION	FIRST DIGIT IS THE NUMBER OF DIGITS IN BTU/H CAPACITY	REFRIGERANT	VOLTAGE	RELEASE VARIANT
RELEASE VARIANT (THE THIRD DIGIT)		LAST TWO DIGITS ARE THE FIRST TWO DIGITS IN RATED BTU/H CAPACITY			

AE
AG
AJ
AK
AL
AW
AZ
FH
HG
RG
RK
TA
TC
TH
TY
VS
VTC

A = 1st
B = 2nd
C = 3rd
etc...

In this example (4) total digits, with the first two (40), or 4,000 BTU capacity

Primary Application Parameters		
Evap Temperature	Rating Point	Motor Starting Torque
1. Low	-10°F	Normal
2. Low	-10°F	High
3. High	+45°F	Normal
4. High	+45°F	High
5. A/C & H/P	+45°F	Normal
9. Commercial	+20°F	High
0. Commercial	+20°F	Normal
W. L/MBP	-10°F / +20°F	Normal
X. L/MBP	-10°F / +20°F	High

Primary Refrigerants [†]
A = R-12/R-410A
B = R-410A
C = R-407C
E = R-22
N = R-1234yf/R-134a
P = R-454C/R-455A
U = R-290
W = R-22/R-407C
X = (CBP Models Only) R-404A/R507 R-134a/R-22 R-407A/R-407F
Y = R134a
Z = R404A/R507

[†]Refrigerant by item numbers as shown.

Voltage Codes
AA = 115/60/1
AB = 115/60/1; 90/50/1
CZ = 230/60/1; 208/50/1
DS = 115-127/60/1
FA = 208-230/60/3
FZ = 220-240/50/1
KZ = 220/60/3; 220/50/3
NA = 208-230/60/1
TZ = 440/60/3; 400/50/3
VA = 265/60/1; 220-240/50/1
XA = 115/60/1; 100/50/1
XB = 230/60/1; 200/50/1
XC = 220-240/50/1
XD = 208-230/60/1; 200/50/1
XF = 208-230/60/3; 200-240/50/3
XG = 460/60/3; 380-420/50/3
XH = 575/60/3; 480-520/50/3
XN = 208-230/60/1; 200-220/50/1
XP = 220/60/1; 200/50/1
XT = 200-230/60/3; 200-220/50/3
XU = 100/60/1; 100/50/1
XV = 265/60/1

NOTE: For explanation of compressor families and codes, contact Tecumseh Products Company.

Tecumseh ARGUS™ NOMENCLATURE



AS	H	R	9	440	Z	NA	M	P	1
CU FAMILY	PRODUCT TYPE	COMPRESSOR	APPLICATION RANGE	NOMINAL CAPACITY R404A	REFRIGERANT	POWER SUPPLY	UNIT CONFIGURATION (APPLICATION)	FACTORY INSTALLED OPTIONS	GENERATION
AS	H = Outdoor - Remote N = Indoor - Remote	S = Scroll R = Recip	9 = Medium 2 = Low First number is total digits. Remainder is capacity in Btu/h. This example; 4,000 Btu/h		Primary Refrigerants R-404A R-448A R-449A R-452A Voltage Codes AA = 115V/60Hz/1 NA = 208-230V/60Hz/1 FA = 208-230V/60Hz/3		M = microchannel with PSC fan motor F = tube and fin with PSC fan motor N = microchannel with high efficiency, EC fan motor H = tube and fin with high efficiency, EC fan motor	S = Silver Z = Zinc P = Platinum T = Titanium G = Gold C = Custom	1 = First

CELSEON MODEL NOMENCLATURE

EXAMPLE: CLSAW413UDS7ES1



CL	S	A	W	413	U	DS	7	E	S	1	-	P
CU FAMILY	BASE TYPE	BASE TYPE	APPLICATION	NOMINAL CAPACITY	REFRIGERANT	POWER SUPPLY	CONDENSER COIL	FAN MOTOR	FACTORY INSTALLED OPTIONS	GENERATION	IF CUSTOM	OPTIONS
CL	S = Standard E = Evaporative	1 = LBP LST 2 = LBP HST W = L/MBP LST X = L/MBP HST A = Chassis 0 B = Chassis 1 C = Chassis 1.5 D = Chassis 2	First number is total digits. Remainder is capacity in Btu/h.	U = R-290		7 = 7 mm 5 = 5 mm AA/LS = 115V/60Hz DS = 115-127V/60Hz GS = 220V/50-60Hz NA = 208-230V/60Hz XA = 115V/60Hz XN = 208-230V/60Hz 200-220V/50Hz		E = EC Fan Motor P = Shaded Pole	S = Sweat Connections P = Sweat Connections, Filter Drier G = Sweat Connections and Service Valves C = Custom	1 = First	P = Power Cord F = Filter Drier	

Note: Model is same as item number

Note: Model is same as item number

SERIAL LABELS

EXAMPLE COMPRESSOR SERIAL LABEL

Diagram of a Tecumseh Compressor Serial Label:

- AK2UCIAT101A40**: BILL OF MATERIAL NUMBER
- AK2431U-XA3B**: MODEL NUMBER
- 04 J0912 11 123458**: CODE DATE (04: LETTER INDICATES MONTH, J09: NEXT TWO DIGITS INDICATE DAY OF MONTH, 12: NEXT TWO DIGITS INDICATE YEAR)
- 525-10017**: THERMALLY PROTECTED COUNTRY OF ORIGIN: USA
- R290**: APPROPRIATE REFRIGERANT*
- 115V - 60Hz, 100V - 50Hz, LRA: 51.5**: ELECTRICAL RATING VOLTS - HERTZ, LRA (LOCKED ROTOR AMPS)
- DATA MATRIX CODE**: DATA MATRIX CODE

*NOTE: Flammable symbol only appears on R290/R600a compressors.

EXAMPLE CONDENSING UNIT SERIAL LABEL

FIRST LETTER INDICATES MONTH (SEE TABLE 1), NEXT 2 DIGITS INDICATE DAY OF THE MONTH, FOLLOWING 2 DIGITS INDICATE YEAR.

TABLE 1: SERIAL LABEL MONTH IDENTIFIERS

A – January	D – April	G – July	K – October
B – February	E – May	H – August	L – November
C – March	F – June	J – September	M – December

MODEL AVA2512ZXNLN		REFRIGERANT R-404A	CHARGE (lbs)
SERIAL NO. 04D2117200249		EVAP. TEMP. RANGE (F) -40F to 10F	
UNIT B.O.M. 32L3140-6U		UNIT DATE 4/21/2017	COMP. DATE 4/15/17
VOLTAGE - HZ - PHASE 208-230V ~ 60Hz		MIN. CIRCUIT AMP. 21.8	
COMPRESSOR MODEL AV182ET-001-A2		Max. circuit breaker (NACR type per NEC) MAX FUSE SIZE (A) 40	
FAN MOTORS(S) 2	QTY 2	VOLTAGE-HZ-PHASE 208-230V ~ 60Hz	FAN HORSEPOWER 50 WATTS
DESIGN PRESSURE (PSIG) 450	HI 181	FLRA .7	PROTECTION THERMALLY
TECUMSEH PRODUCTS COMPANY 5424 HIGHWAY 145 SOUTH TUPELO, MS 38879-0527			

IDENTIFICATION OF DATE OF MANUFACTURE (VSC SERIES SCROLL COMPRESSORS)

COMMERCIAL BACK PRESSURE (CBP) & AIR CONDITIONING (HBP) MODELS

S	03	09	K	12345
Manufacturing Location	Production Week	Production Year		5 Digit Serial Number

All Tecumseh VSC Series scroll compressors with a "Code Date" of S1915 or later for CBP & HBP models or, with a "Code Date" of FE25 or later for LBP models, are subject to the new Warranty Policy.

LOW BACK PRESSURE (LBP) MODELS

A	B	25	12345678
Year Code	Month Code	Plant Assembly Line Code	8 Digit Serial Number

SERIAL LABEL MONTH IDENTIFIERS

A – 2010/January	D – 2013/April	G – 2016/July	K – 2019/October
B – 2011/February	E – 2014/May	H – 2017/August	L – 2020/November
C – 2012/March	F – 2015/June	J – 2018/September	M – 2021/December

NOTES:



Tecumseh

TECUMSEH COMPRESSOR COMPANY LLC

Subsidiary of Tecumseh Products Company LLC

5683 Hines Drive | Ann Arbor, MI 48108

734.585.9500 | www.tecumseh.com

