



# ENGINEERING POLICY

*Tecumseh*

**SUBJECT: Load Limits for Rubber Mounting Grommets**

Publication no. EP-5

PAGE: 1 of 4

Issued: November 3, 1970

REV.DATE: 2/13/2019

---

Rubber and synthetic rubber mounting grommets are subject to permanent deformation when exposed to long-term static loads. The rate of the deformation process is accelerated when the mounting grommet is subjected to excessive load and/or temperature.

Customers applying Tecumseh rubber grommets to applications other than those recommended must stay within the recommended safe loads listed below to assure satisfactory performance and life expectancy of the mounting grommet.

<i>Tecumseh Number</i>	<i>Max Static Load Lbs.</i>
70456-1	10
70711	15
70496	25
70749	30
70068-3	35
70068	40
70650-1	50

The application designer should be aware that the sleeve length of each of the recommended combinations is very critical so as to assure positive clearance between the washer and grommet.



*Tecumseh*

# ENGINEERING POLICY

**SUBJECT: Load Limits for Rubber Mounting Grommets**

Publication no. EP-5

PAGE: 2 of 4

Issued: November 3, 1970

REV.DATE: 2/13/2019

## PART I Recommended Mounting Grommet & Sleeve Arrangement

Models	Grommet	Sleeve		
		Part No.	O.D." (mm)	Length" (mm)
TH & AZ-3/4" Mounting Holes	70456-1	70964	3/8 (9.5)	11/16 (17.4)
THK	70963	BR5093	3/8 (9.5)	21/32 (16.5)
	111960	MISC-409-00	7/16 (11.1)	15/16 (23.8)
	MLX-068-00 (Small Hole)	MLX-069-00	11/32 (8.7)	11/16 (17.4)
	MISC-293-01 (Big Hole)	MISC-273-00	7/16 (11.1)	7/8 (22.2)
AE, AZ, THK & TP	70951	NA	NA	NA
AEX1380XXX & Smaller	70456-1	70457	7/16 (11.1)	11/16 (17.4)
AEX4430XXX & Smaller	70456-1	70457	7/16 (11.1)	11/16 (17.4)
AEX1410XXX & Larger	70711 & 71230	70459	7/16 (11.1)	29/32 (23.0)
AEX3440XXX & Larger	70711 & 71230	70459	7/16 (11.1)	29/32 (23.0)
AE A/C (3 & 4 Leg)	70711 & 71230	70459	7/16 (11.1)	29/32 (23.0)
TP	70711 & 71230	70459	7/16 (11.1)	29/32 (23.0)
TC, VTC, CASCADE & SIERRA	70711	70459	7/16 (11.1)	29/32 (23.0)
AK <sup>2</sup> & AK A/C & Commercial (3 & 4 Leg)	70711 & 70496	70459	7/16 (11.1)	29/32 (23.0)
AJ A/C & Commercial (3 & 4 Leg)	70711, 70496 & 70749	70459	7/16 (11.1)	29/32 (23.0)
AH, AW & AV (3 & 4 Leg), SIERRA	70749	70970	7/16 (11.1)	1 1/8 (28.6)
AG	70650-1	71035	7/16 (11.1)	1 7/16 (36.5)
RK	70941	70953	3/8 (9.5)	1 9/32 (32.5)
RK <sup>2</sup>	114-10018, 114-10019, 114-10020 & 114-10021	714-10007	7/16 (11.1)	1 5/16 (33.3)
HG, RG & SIERRA	70941	70953	3/8 (9.5)	1 9/32 (32.5)
SIERRA	70941	71000	3/8 (9.5)	1 5/16 (33.3)
MESA	114-10022	NA	NA	NA
ATLAS	114-10023	122-10202	13/32 (10.3)	.799 (20.3)
AW	AWX-2025-05	AWX-2026-04	1/2 (12.7)	1 1/2 (38.1)
	AWX-2121-02	AWX-2108-02	7/16 (11.1)	1 1/2 (38.1)
	AWX-1963-04	AWX-2144-00	7/16 (11.1)	1.224 (31.1)
	AWX-1963-04	122-10211	7/16 (11.1)	1.133 (28.8)

**NOTE:** 1. Max nut torque on all mounting fasteners to be 10-13 ft./lbs. (milled steel).



Tecumseh

# ENGINEERING POLICY

**SUBJECT: Load Limits for Rubber Mounting Grommets**

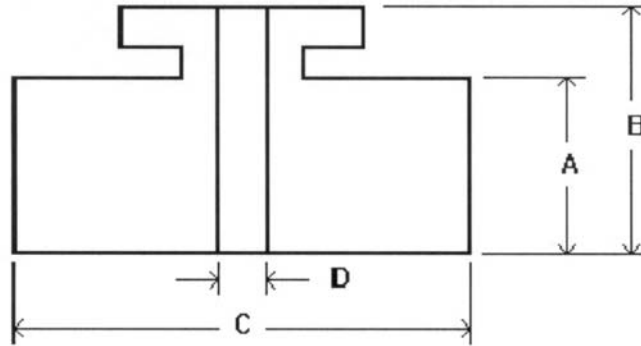
Publication no. EP-5

PAGE: 3 of 4

Issued: November 3, 1970

REV.DATE: 2/13/2019

## PART II Grommet Dimensions



**NOTE:** This is a generic grommet drawing and does not represent specific grommet configurations.

Part No.	Durometer	Dimensions (No Load)			
		Inches (mm)			
		A	B	C	D
70068	50 ±3	.375 (9.5)	.688 (17.5)	1.250 (31.8)	.469 (11.9)
70068-3	37 ±3	.375 (9.5)	.688 (17.5)	1.250 (31.8)	.469 (11.9)
70456-1	37 ±3	.375 (9.5)	.688 (17.5)	1.250 (31.8)	.438 (11.1)
70496	37 ±3	.594 (15.1)	.906 (23.0)	1.250 (31.8)	.448 (11.4)
70650-1	37 ±3	1.156 (29.4)	1.437 (36.5)	1.625 (41.3)	.448 (11.4)
70711	37 ±3	.625 (15.9)	.938 (23.8)	1.247 (31.7)	.438 (11.1)
70749	37 ±3	.813 (20.7)	1.125 (28.6)	1.445 (36.7)	.448 (11.4)
70941	37 ±3	.984 (25.0)	1.260 (32.0)	1.496 (38.0)	.400 (10.2)
71230	45 ±3	0.494 (12.5)	0.807 (20.5)	.938 (23.8)	.469 (11.9)
70963	40 ±5	.375 (9.5)	.688 (17.5)	1.250 (31.8)	.375 (9.5)
114-10007	40 ±5	.750 (19.1)	1.160 (29.5)	1.620 (41.1)	.440 (11.2)
114-10018	40 ±4	1.083 (27.5)	1.240 (31.5)	1.339 (34.0)	.453 (11.5)
114-10019	40 ±4	1.004 (25.5)	1.280 (32.5)	1.575 (40.0)	.453 (11.5)
114-10020	40 ±4	1.004 (25.5)	1.280 (32.5)	1.339 (34.0)	.453 (11.5)
114-10021	40 ±4	1.004 (25.5)	1.280 (32.5)	1.417 (36.0)	.453 (11.5)



*Tecumseh*

# ENGINEERING POLICY

**SUBJECT: Load Limits for Rubber Mounting Grommets**

Publication no. EP-5

PAGE: 4 of 4

Issued: November 3, 1970

REV.DATE: 2/13/2019

## CON'T: PART II Grommet Dimensions (chart)

114-10022	50 ±4	.709 (18.0)	.894 (22.7)	.787 (20.0)	.260 (6.6)
114-10023	40 ±4	.551 (14.0)	.827 (21.0)	1.130 (28.7)	.413 (10.5)
70951	39 ±5	.395 (10.0)	.671 (17.0)	.986 (25.0)	.375 (9.5)
111960	40 ±3	.625 (15.9)	.938 (23.8)	1.247 (31.7)	.438 (11.1)
MLX-068-00 (Small Hole)	41 ±3	.590 (14.9)	.850 (21.5)	1.200 (30.5)	.337 (8.5)
MISC-293-01 (Big Hole)	40 ±3	.430 (10.9)	.680 (17.2)	1.250 (31.7)	.430 (10.9)
AWX-2025-05	40±5	1.181 (30.0)	1.496 (38.0)	1.653 (42.0)	0.512 (13.0)
AWX-2121-02	40±5	1.181 (30.0)	1.496 (38.0)	1.653 (42.0)	0.441 (11.2)
AWX-1963-04	40±5	0.890 (22.6)	1.201 (30.5)	1.370 (34.8)	0.413 (10.5)